

# Nice MetroKit

## For swing gates with leaves up to 3.5 m, underground installation.

Electromechanical, irreversible gear motors, also in 24 Vdc version, with magnetic encoder.

**The 24 Vdc version with magnetic encoder and new control unit Moonclever (MC824H) equipped with BlueBUS technology, is designed for operation with the solar power system Solemyo.**

## A more evolved range:

No welding for optimization of durability and performance: new boxes in **cataphoresis finish (MECF)**, highly resistant to corrosion, both with mechanical stop on opening.

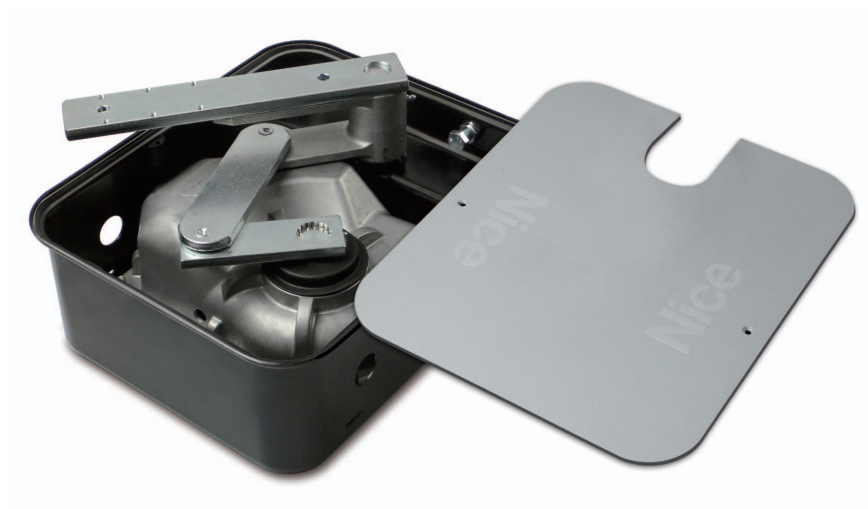
**Reliable and resistant:** motors made up of solid internal parts in metal and bronze alloy. New IP67 waterproof die cast aluminium.

**Total freedom of choice:** release from inside and outside, two key-operated models or freely compatible lever version and easily activated with just one hand.

**Simple to use:** mechanical stop system on closure. Standard opening max. 110°, optional opening 360°.

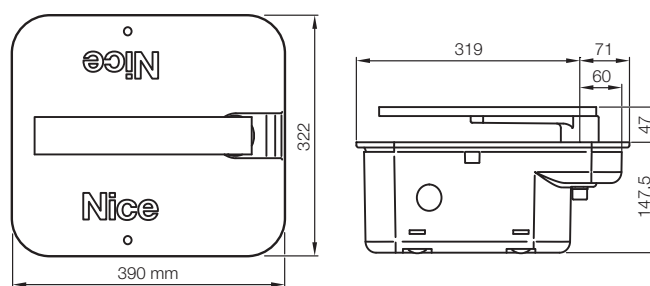
**24 Vdc version** with magnetic encoder, for intensive use

- easy programming by pressing a single button
- clutch with anti-crush safety feature
- automatic memorization of limit switches in opening and closing with self-learning function
- pause time programming; partial opening; slowdown during opening and closing
- the system will operate during a blackout by means of rechargeable batteries.

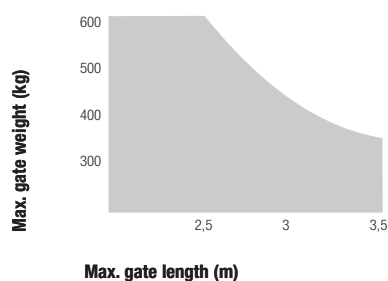


Technical specifications		ME3024	ME3000
Power	(Vac 50 Hz)	-	230
	(Vdc)	24	-
Current absorbed	(line) (A)	5	1.2
Power absorbed	(W)	120	250
Supplied capacitor	(µF)	-	10
Protection level	(IP)	67	
Torque	(Nm)	250	300
Speed	(Rpm)	1.4	1.14
Working temp.	(°C Min/Max)	-20 ÷ +50	
Thermal cut-out	(°C)	-	140
Work cycle	(%)	80	30
Dimensions	(mm)	390x194.5x322	
Weight	(kg)	11	

## Dimensions

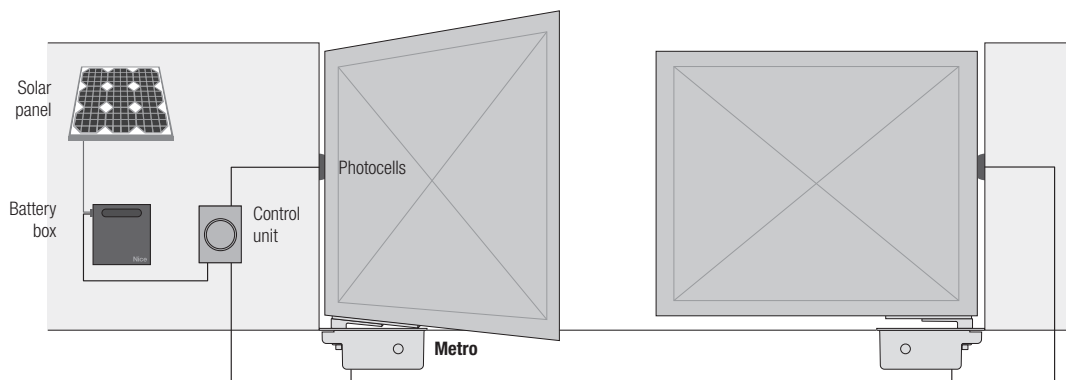
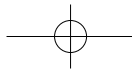


## Utilisation limits



Max. gate length (m)

The shape, the height of the gate and the weather conditions can considerably reduce the values shown in the graph to the side. Use in windy areas 230 Vac models.



Approximate draft



Product in details



Compact and elegant,  
blends in perfectly  
with any architectural style.

**SolemyoKit** (Optional)

Including:



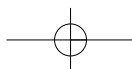
**SYP**  
photovoltaic  
solar panel  
for 24 V power supply  
1 pc



**PSY24**  
24 V battery box  
with control circuit  
and carry handle  
1 pc



**SYA1**  
power supply unit  
for charging the  
battery PSY24 from  
the supply mains  
1 pc



# Nice MetroKit

## For a pair of gates

### MetroKit 1

230 Vac motor, including:

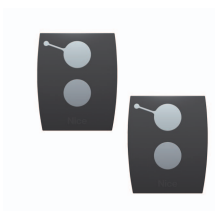
Nice Price **£ 1,230.00**



**ME3000**  
irreversible  
electromechanical  
gear motors,  
230 Vac, greased  
2 pcs



**MECF**  
two externally chamfered  
foundation box with  
cataphoresis finish  
with mechanical stop  
on opening  
2 pcs



**ON2**  
two transmitters  
433.92 MHz,  
2 channels  
2 pcs



**A60**  
one control unit  
with plug-in  
receiver SMXI  
1 pc



**BF**  
one couple of  
surface-mounted  
photocells  
1 pc



**OXI**  
receiver up to 4 channels  
with connector, without  
built-in transmitter  
1 pc



**MEA3**  
lever-type key  
unlock system  
1 pcs

### MetroKit 2

24 Vdc motor, including:

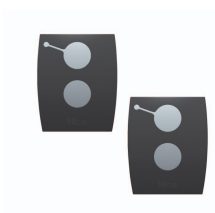
Nice Price **£ 1,435.00**



**ME3024**  
irreversible  
electromechanical  
gear motors, 24 Vdc,  
with magnetic encoder  
2 pcs



**MECF**  
two externally chamfered  
foundation box with  
cataphoresis finish  
with mechanical stop  
on opening  
2 pcs



**ON2**  
two transmitters  
433.92 MHz,  
2 channels  
2 pcs



**MC824H**  
control unit  
for two motors,  
with 24 Vdc encoder  
1 pc



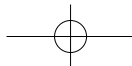
**MOFB**  
one couple of outdoor  
photocells designed  
for connection  
via Nice BlueBUS  
1 pc



**OXI**  
receiver up to 4 channels  
with connector, without  
built-in transmitter  
1 pc



**MEA3**  
lever-type key  
unlock system  
1 pcs



# Nice MetroKit

## For a single gate

### MetroKit 3

230 Vac motor, including:

Nice Price **£ 835.00**



#### ME3000

irreversible electromechanical gear motors, 230 Vac, greased  
1 pcs



#### MECF

one externally chamfered foundation box with cataphoresis finish with mechanical stop on opening  
1 pcs



#### ON2

two transmitters 433.92 MHz, 2 channels  
2 pcs



#### A60

one control unit with plug-in receiver SMXI  
1 pc



#### BF

one couple of surface-mounted photocells  
1 pc



#### OXI

receiver up to 4 channels with connector, without built-in transmitter  
1 pc



#### MEA3

lever-type key unlock system  
1 pcs

### MetroKit 4

24 Vdc motor, including:

Nice Price **£ 1,005.00**



#### ME3024

irreversible electromechanical gear motors, 24 Vdc, with magnetic encoder  
1 pcs



#### MECF

one externally chamfered foundation box with cataphoresis finish with mechanical stop on opening  
1 pcs



#### ON2

two transmitters 433.92 MHz, 2 channels  
2 pcs



#### MC824H

control unit for two motors, with 24 Vdc encoder  
1 pc



#### MOFB

one couple of outdoor photocells designed for connection via Nice BlueBUS  
1 pc



#### OXI

receiver up to 4 channels with connector, without built-in transmitter  
1 pc



#### MEA3

lever-type key unlock system  
1 pcs

