

Nice Hyppokit

For swing gates with leaves up to 3 m also with large pillars, surface mounted, also in 24 Vdc version with magnetic encoder, with articulated arm.

The 24 Vdc version with magnetic encoder and new control unit Moonclever (MC824H) equipped with BlueBUS technology, is designed for operation with the solar power system Solemyo.

Single model for right and left leaves. Two irreversible versions, with 230 Vac (HY7005) and 24 Vdc (HY7024) power supplies with magnetic encoder. Fewer connections mean **quicker installation.**

Pre-wired, incorporated double limit-switch both during opening and closing (HY7005).

Easy to install: nothing welded to the gates.

Long-lasting: solid metal mechanics.

Compact: shockproof bodywork with no sharp corners.

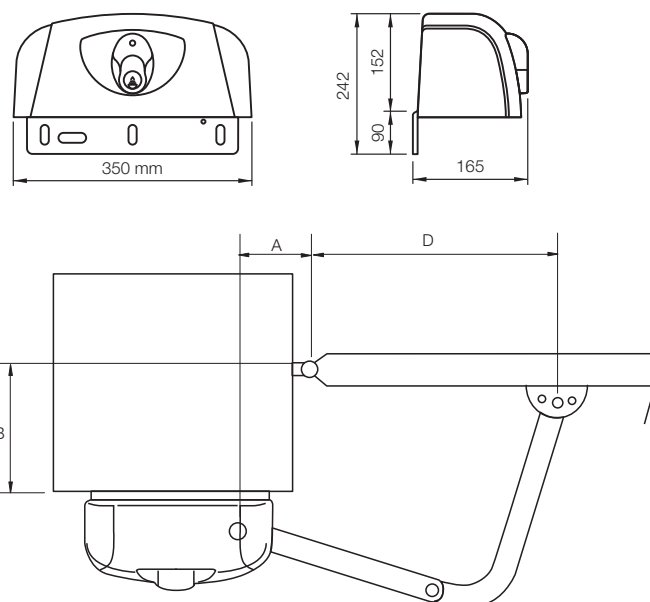
24 Vdc version with magnetic encoder, perfect for intensive use

- easy programming by pressing a single button
- clutch with anti-crush safety feature
- automatic memorization of limit switches in opening and closing with self-learning function
- pause time programming; partial opening; slowdown during opening and closing
- the system will operate during a blackout by means of rechargeable batteries



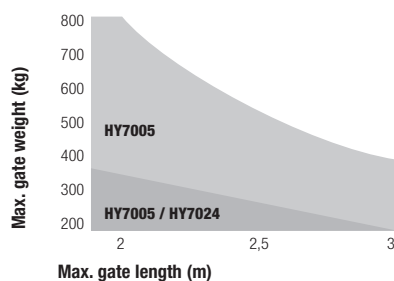
Technical specifications		HY7024	HY7005
Power	(Vac 50 Hz)	-	230
	(Vdc)	24	-
Current absorbed	(line) (A)	5	1.2
Power absorbed	(W)	120	250
Incorporated capacitor	(μ F)	-	10
Protection level	(IP)	44	
Torque	(Nm)	250	400
Speed	(Rpm)	2	1.7
Opening time	(s)	10	12
Working temp.	(°C Min/Max)	-20 ÷ +50	
Thermal cut-out	(°C)	-	140
Work cycle	(%)	80	30
Dimension	(mm)	350x242x165	
Weight	(kg)	13	

Dimensions

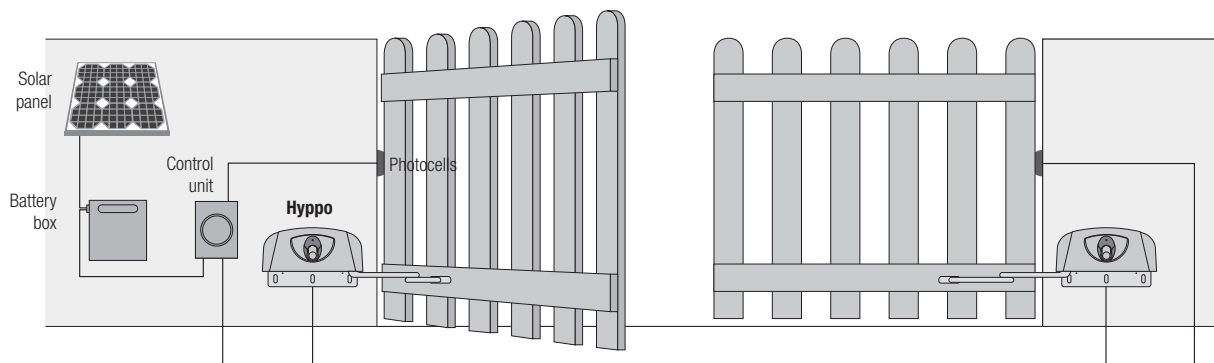
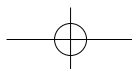


	A max	B max	D max
standard	150	350	450

Utilisation limits



N.B. The above values are valid if the motor is used with standard accessories. The shape, the height of the gate and the weather conditions can considerably reduce the values shown in the graph to the side. Use in windy areas 230 Vac models.



Approximate draft



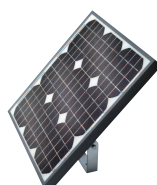
Product in details



Sturdy, anti-shearing arm, galvanised and painted; strengthened in those areas subjected to greater mechanical stress.

SolemyoKit (Optional)

Including:



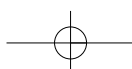
SYP
photovoltaic solar panel for 24 V power supply
1 pc



PSY24
24 V battery box with control circuit and carry handle
1 pc



SYA1
power supply unit for charging the battery PSY24 from the supply mains
1 pc



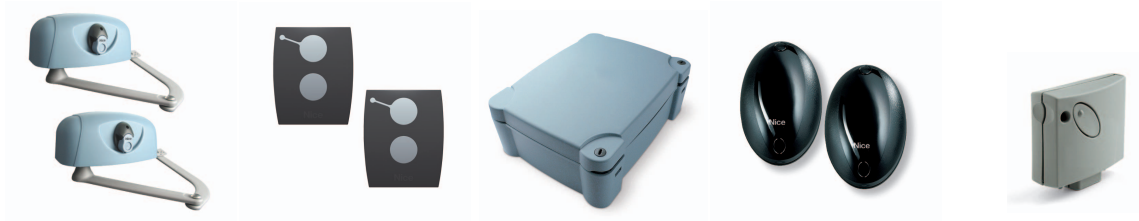
Nice HyppoKit

For a pair of gates

HyppoKit 1

230 Vac motor, including:

Nice Price **£ 1,133.00**



HY7005

two irreversible electromechanical gear motors, 230 Vac, with sturdy articulated shear-proof arm, galvanized and painted
2 pcs

ON2

two transmitters 433.92 MHz, 2 channels
2 pcs

A60

one control unit with plug-in receiver SMXI
1 pc

BF

one couple of surface-mounted photocells
1 pcs

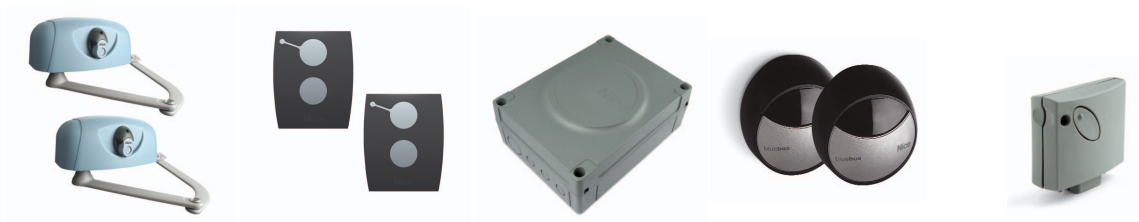
OXI

receiver up to 4 channels with connector, without built-in transmitter
1 pc

HyppoKit 2

24 Vdc motor, including:

Nice Price **£ 1,343.00**



HY7024

two irreversible electromechanical gear motors, 24 Vdc, with magnetic encoder, with shear-proof articulated arm, galvanised and painted
2 pcs

ON2

two transmitters 433.92 MHz, 2 channels
2 pcs

MC824H

control unit for two motors, with 24 Vdc encoder
1 pc

MOFB

one couple of outdoor photocells designed for connection via Nice BlueBUS
1 pc

OXI

receiver up to 4 channels with connector, without built-in transmitter
1 pc

Nice HyppoKit

For a single gate

HyppoKit 3

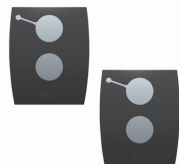
230 Vac motor, including:

Nice Price **£ 730.00**



HY7005

one irreversible electromechanical gear motors, 230 Vac, with sturdy articulated shear-proof arm, galvanized and painted
1 pcs



ON2

two transmitters
433.92 MHz,
2 channels
2 pcs



A60

one control unit
with plug-in
receiver SMXI
1 pc



BF

one couple
of surface-mounted
photocells
1 pc



OXI

receiver up to 4 channels
with connector, without
built-in transmitter
1 pc

HyppoKit 4

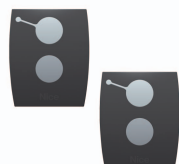
24 Vdc motor, including:

Nice Price **£ 888.00**



HY7024

one irreversible electromechanical gear motors, 24 Vdc, with magnetic encoder, with shear-proof articulated arm, galvanised and painted
1 pcs



ON2

two transmitters
433.92 MHz,
2 channels
2 pcs



MC824H

control unit
for two motors,
with 24 Vdc encoder
1 pc



MOFB

one couple of outdoor
photocells designed
for connection
via Nice BlueBUS
1 pc



OXI

receiver up to 4 channels
with connector, without
built-in transmitter
1 pc