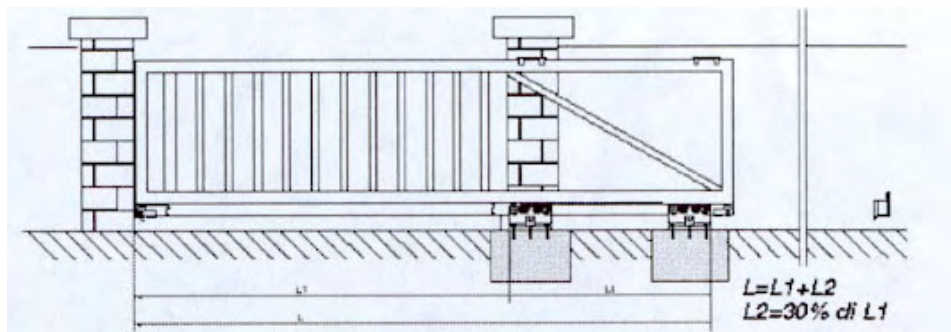


Rolling Center Cantilever Systems The Ultimate Sliding Gate system



These systems are ideal for both residential and commercial sliding gates. Available in three sizes: Mini (for gate openings upto 4m/400kg), Medium (openings upto 6m/600kg), Magnum (openings upto 15m/1200kg).



Advantages over standard track and wheel systems:

- * No track to lay in the ground.
- * Reduces ground works
- * Reduces labour cost
- * Better for commercial applications where high volumes of heavy traffic exist
- * No maintenance required - Fit and Forget!
- * Aesthetically pleasing

†† Check the following page for individual components.

1



(1) Fixing Staves	Price (each)
Screw Type - Art No. 48	
Weld Type - Art No. 49	

2



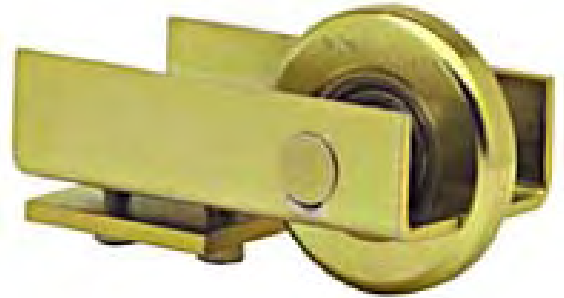
(2) Cantilever Track	Price (3 mt.)	Price (6 mt.)
Mini GIPI 4 RP		
Mini GIPI 4 RPZ		
Medium GIPI 4 RG		
Medium GIPI 4 RGZ		
Magnum GIPI 4 RM		
Magnum GIPI 4 RMZ		

3



(3) Meeting Point	Price (each)
Mini 50 B	
Medium 50 P	
Magnum 50 G	

4



(4) Guide Wheel for Track	Price (each)
Mini 41 B	
Medium 41 P	
Magnum 41 G	

5



(5) Carriage Units (2 Required)	Price (each)
Mini CA4 RPS (upto 4m/400kg)	
Medium CA4 RS (upto 6m/600kg)	
Magnum CA4 RMS(upto 15m/1200kg)	

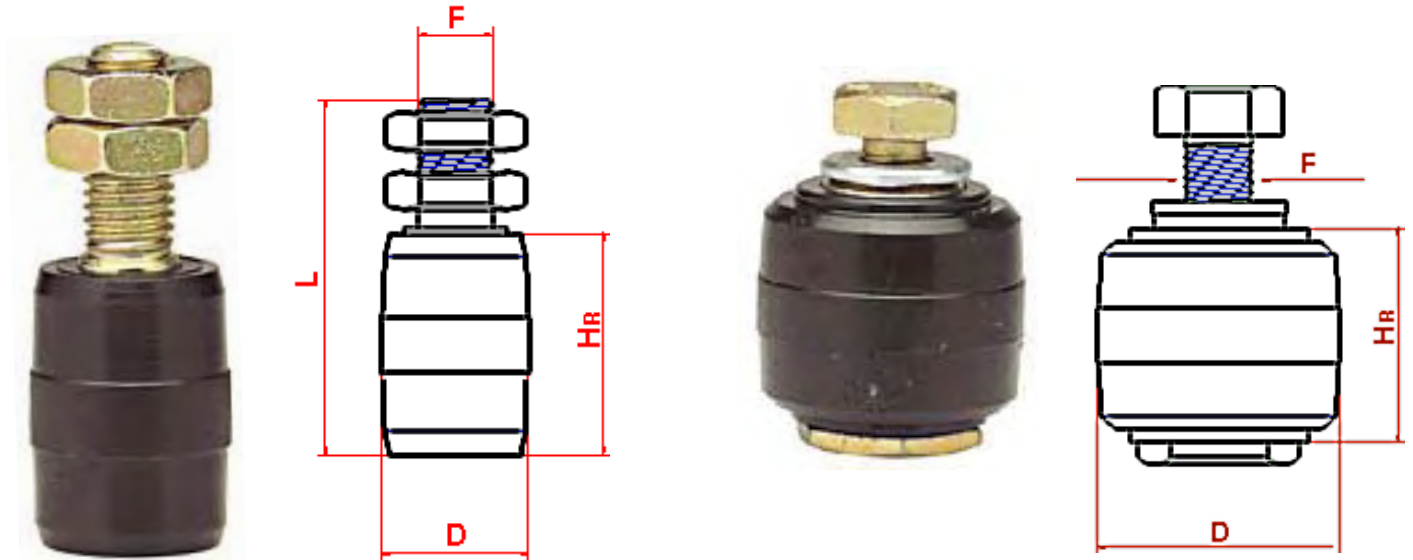
6



(6) Galvanised Steel Rack	Price (each)
1 Metre	

ROLLING CENTER

Nylon Rollers



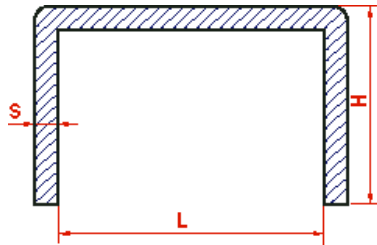
Article		D	HR	L	F	Price
Reference		Dia	mm		Uni	
CN 25	□P 25 40 C0	25	40	73	M 14	
CN 28	□P 28 40 C0	28	40	73	M 14	
CN 30	□P 30 40 C0	30	40	73	M 14	
CN 32	□P 32 40 C0	32	40	73	M 14	
CN 40	□P 40 60 C0	40	60	96	M 20	
CN 42	□p 42 60 C0	42	60	96	M 20	
BN 36	□ P 36 32 B0	36	32	-	M 10 x 20	

Rubber Stoppers

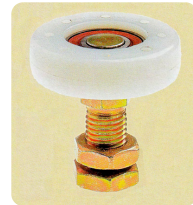


Article		D	F	L	Price
Reference		Dia (mm)		(mm)	
TP 30	FP 25 40 C0	30	5	12.5	
TP 40	FP 28 40 C0	40	10	40	
TP 50	FP 30 40 C0	40	10	50	

===== | Special Guide for Sliding Gates and Doors | =====

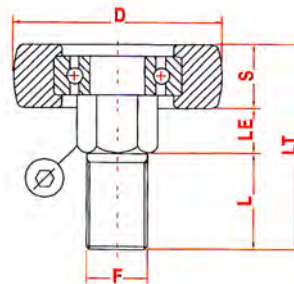
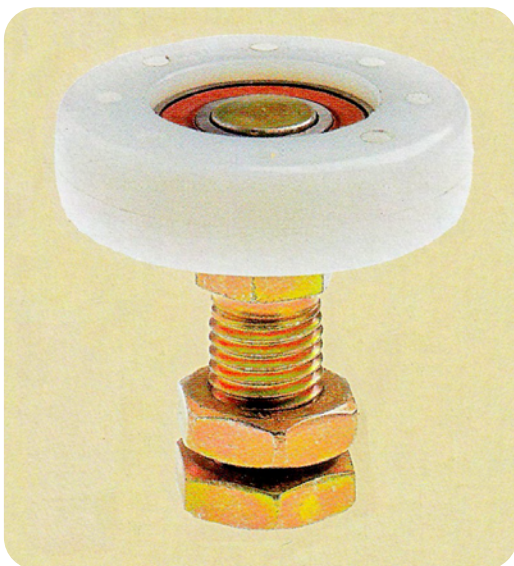


To be used with



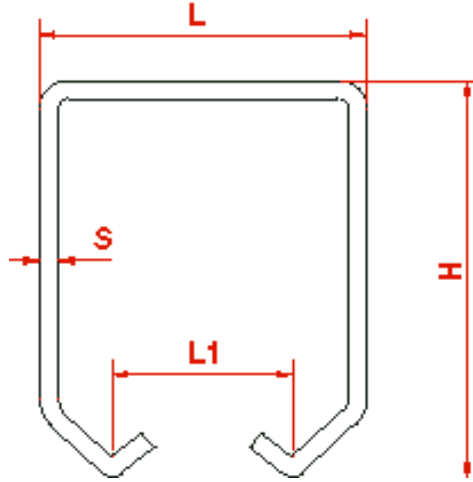
Part No.	Dimension (mm)			Description	Max weight (kgs)	Price (each)
	L	S	H			
58/40 G	42	3	35	Galvanised	312	
58/40 Z	42	3	35	Zinc Finish	312	
58/48 G	50	3	35	Galvanised	340	
58/48 Z	50	3	35	Zinc Finish	340	
58/60 G	62	3	35	Galvanised	370	
58/60 Z	62	3	35	Zinc Finish	370	
58/65 G	67	3	40	Galvanised	420	
58/65 Z	67	3	40	Zinc Finish	420	
58/70 G	72	3	40	Galvanised	438	
58/70 Z	72	3	40	Zinc Finish	438	
58/80 G	82	3	45	Galvanised	480	
58/80 Z	82	3	45	Zinc Finish	480	

== | Plain Nylon Wheels with Bearing & Threaded pin for Special Guides | ==



Part No.	Dimension						Price (Each)
	D	S	FXL	∅	LE	LT	
	millimetres						
RNF 40	40	15	M 14 X 40	17	8	63	
RNF 48	48	15	M 14 X 40	17	8	63	
RNF 60	60	19	M 20 X 40	22	13	72	
RNF 65	65	19	M 20 X 40	22	13	72	
RNF 70	70	19	M 20 X 40	22	13	72	
RNF 80	80	23	M 20 X 40	22	10	73	

=====
| Monorail for Carriages |
=====

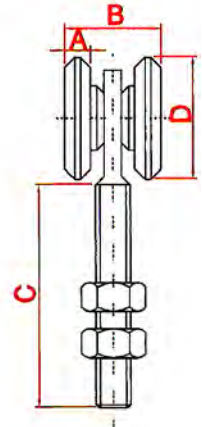
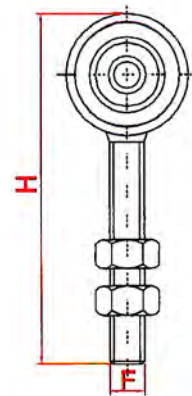
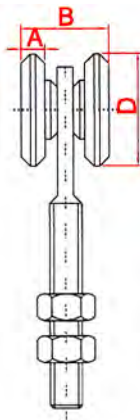
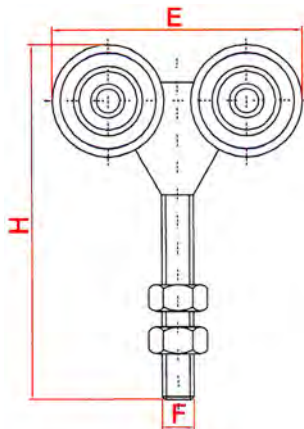


To be used with



Part No.	To be used with	Dimension (mm)				Description	Max weight (kgs)	Price (each)
		L	S	H	L1			
80 G	2 RC / 2 RC F	33	2	35	20	Galvanised	202	
80 Z	4 RC / 4 RC F 4 RC M.LUNA	33	2	35	20	Zinc Finish	202	
81 G	2 RB	42	2.5	56	24	Galvanised	379	
81 Z	4 RB / 4 RBP	42	2.5	56	24	Zinc Finish	379	
82 G	2 RA	56	3	71	30	Galvanised	584	
82 Z	4 RA	56	3	71	30	Zinc Finish	584	

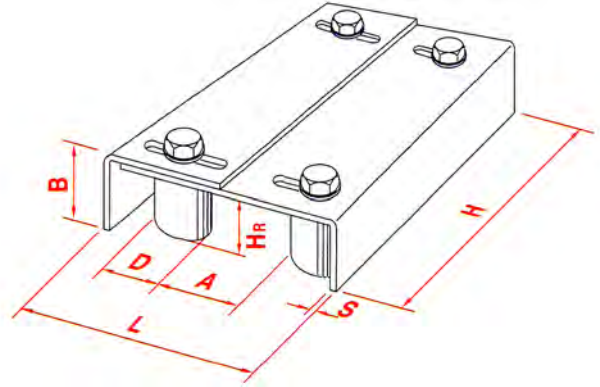
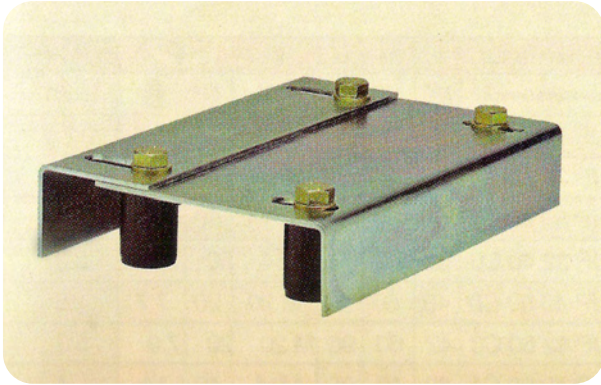
=====
| Small/Medium/Large Carriage with Pin for Monorail |
=====



Part No.	Dimension						Max weight (kgs)	Price (each)
	D	A	B	F x L	H	E		
	millimetres							
4 RC F	24	6	25	M 8x35	61	52	110	
4 RB	45	9	33	M 12x60	115	92	180	
4 RA	55	11	41	M 20x77	150	115	200	

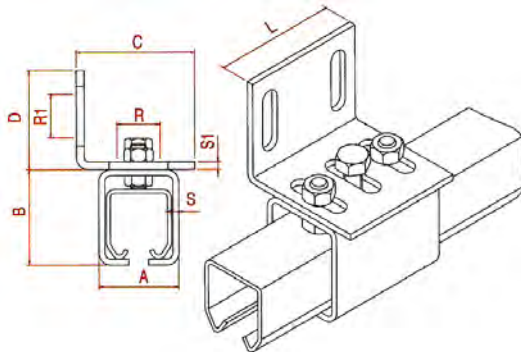
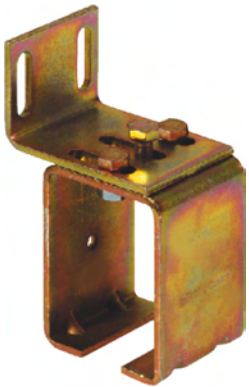
Part No.	Dimension					Max weight (kgs)	Price (each)
	D	A	B	F x L	H		
	millimetres						
2 RC F	24	6	25	M 8x35	62	40	
2 RB	45	9	33	M 12x60	108	150	
2 RA	55	11	41	M 20x77	150	170	

===== | Plate with Rollers, medium and large guide | =====

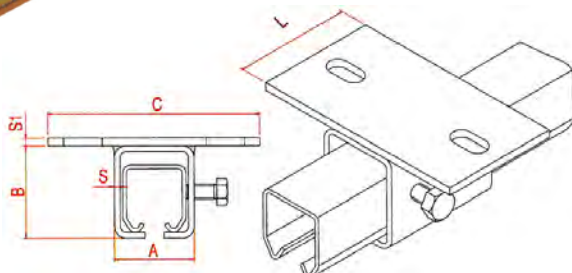
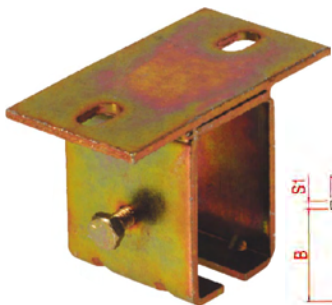


Part No.	Dimension							Price (Each)
	L	H	S	A min/max	B	D	HR	
	millimetres						Ø mm	
4 RM	130 x 170	200	3	35/60	55	30	40	
4 RG	195 x 245	350	4	60/100	67	40	40	

==== | Standard Ceiling Support for Monorail Fixing and Adjustment | =====

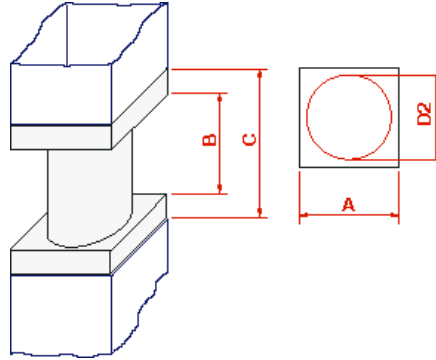


Part no.	Dimension (mm)								Price (each)
	A	B	C	D	L	S	S1	R/R1	
P 80	40.5	48	60	50	60	3	4	22	
P 81	51.5	71	70	50	60	4	4	22	
P 82	65.5	86	80	50	60	4	4	22	



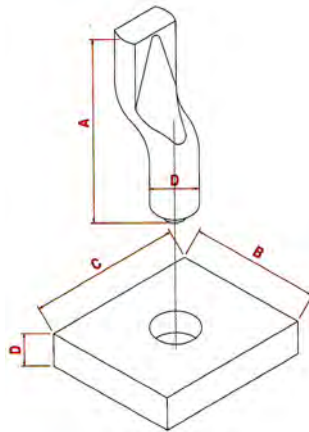
Part no.	Dimension (mm)							Price (each)
	A	B	C	D	L	S	S1	
S 80	40.5	48	110	50	60	3	4	
S 81	51.5	71	120	50	60	4	4	
S 82	65.5	86	130	50	60	4	4	

Upright gate joint element



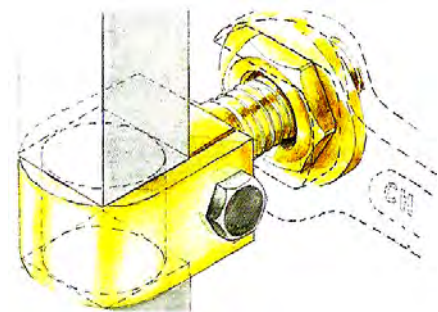
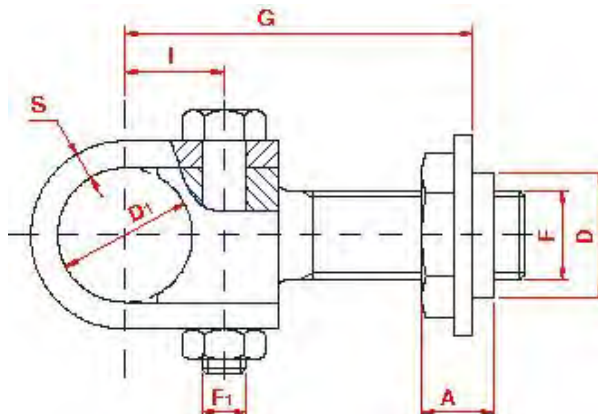
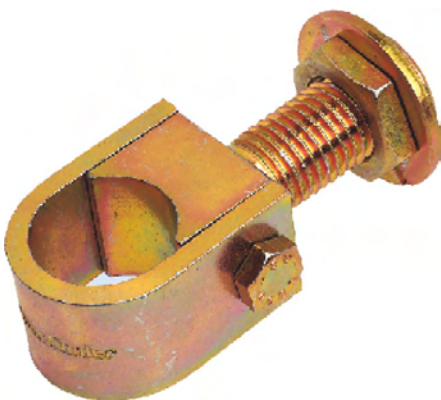
Part No.	Dimension				Price (Each)
	d2 Ø	A	B	C	
T 30	28.5	35	35	55	
T 35	33.5	40	40	60	
T 40	38.5	50	45	65	

Plate



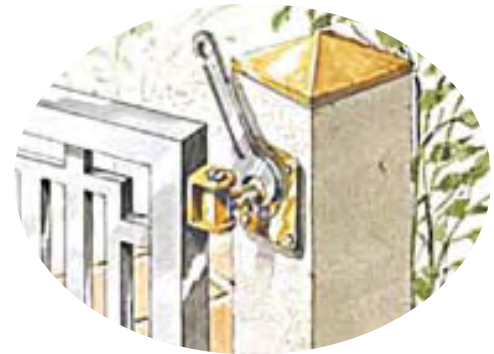
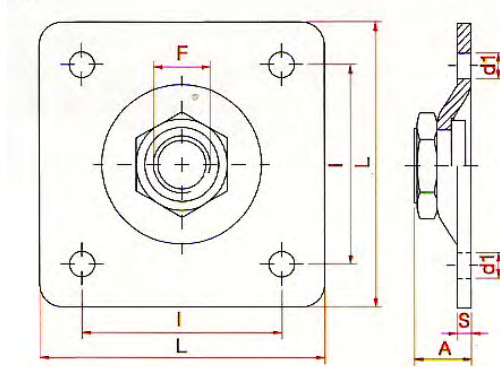
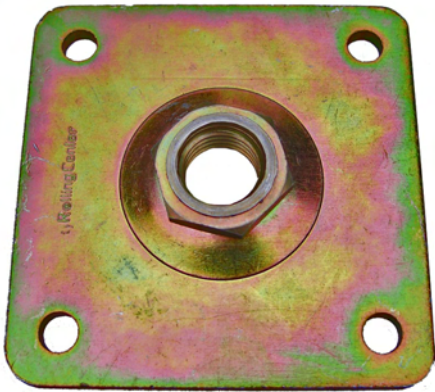
Part No.	Dimension					Price (Each)
	A	B	C	D	Ø	
132 P	89	63	60	15	20	
132 G	96	60	60	20	24	

Adjustable hinge to be welded



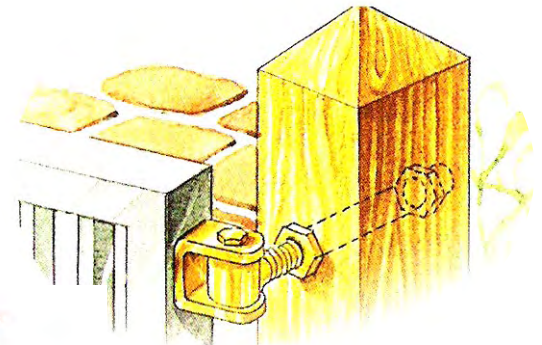
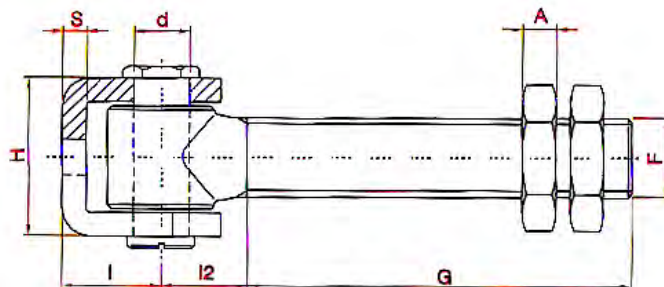
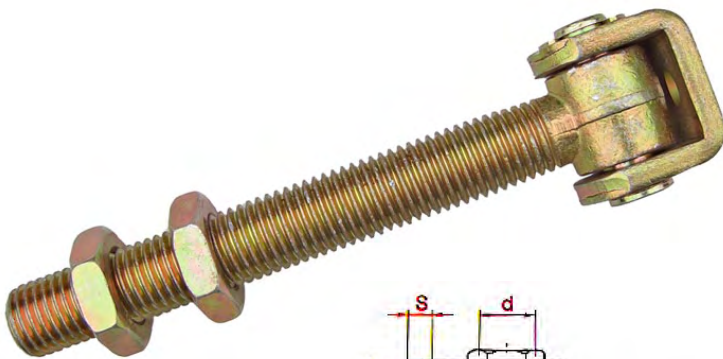
Part No.	Dimension								Price (Each)
	d	d2	F	F1	G	I	S	A	
	Ø		UNI		min/max	mm			
CR 30	28	30	M20	M10	50 - 78 mm	21	6	16	
CR 35	34	35	M24	M10	57 - 88 mm	26	6	19	
CR 40	43	40	M30	M12	70 - 110 mm	34	6	24	

Adjustable Hinge Plate

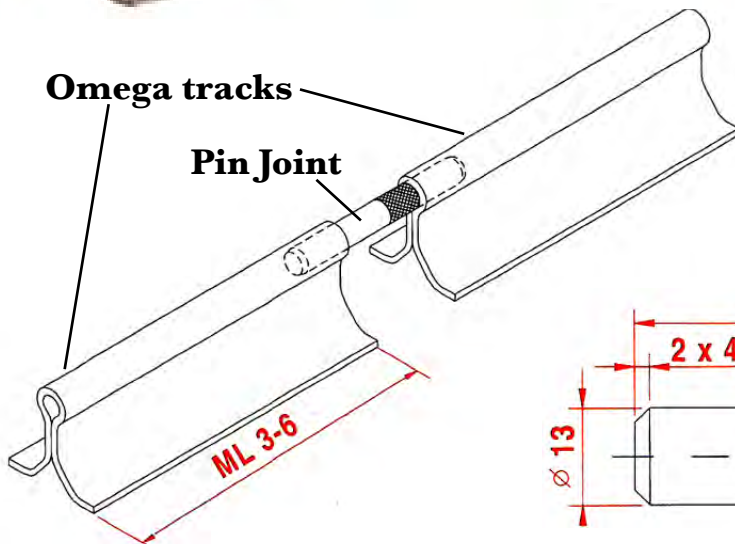
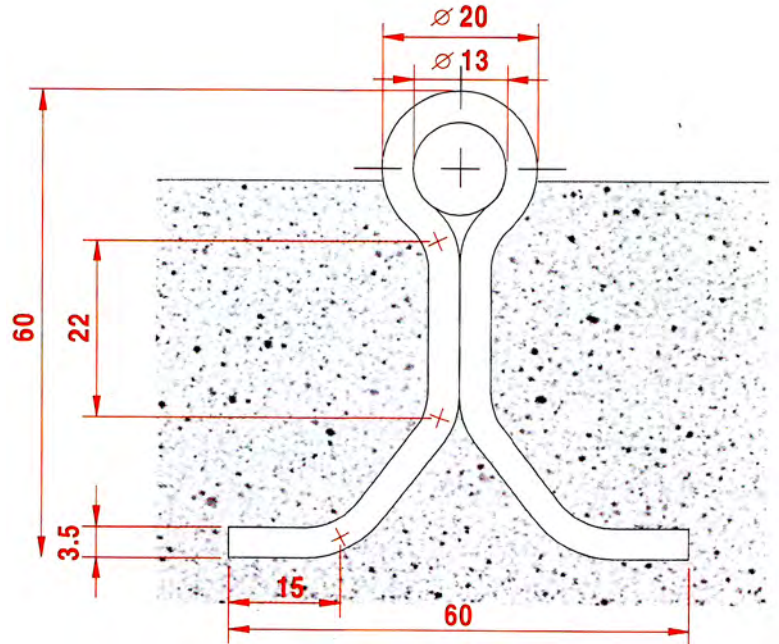


Part No.	Dimension						Price (Each)
	L	F	d1	S	A	I	
	□	Uni	Ø	milimetres			
PR 20	100	M20	9	5	20	70	
PR 24	120	M24	11	6	20	90	

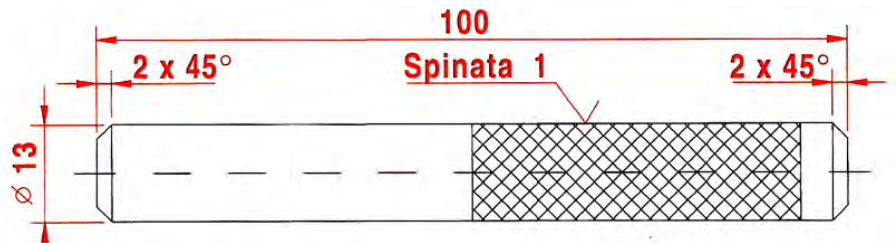
Hinge with longer bar



Part No.	Dimension								Price (Each)
	d	F	G	I	I2	H	S	A	
	Ø	UNI	milimetres						
CL 20	14	M20	145	24	20	39	5	8	
CL 24	17	M24	142	28	23	48	6	10	



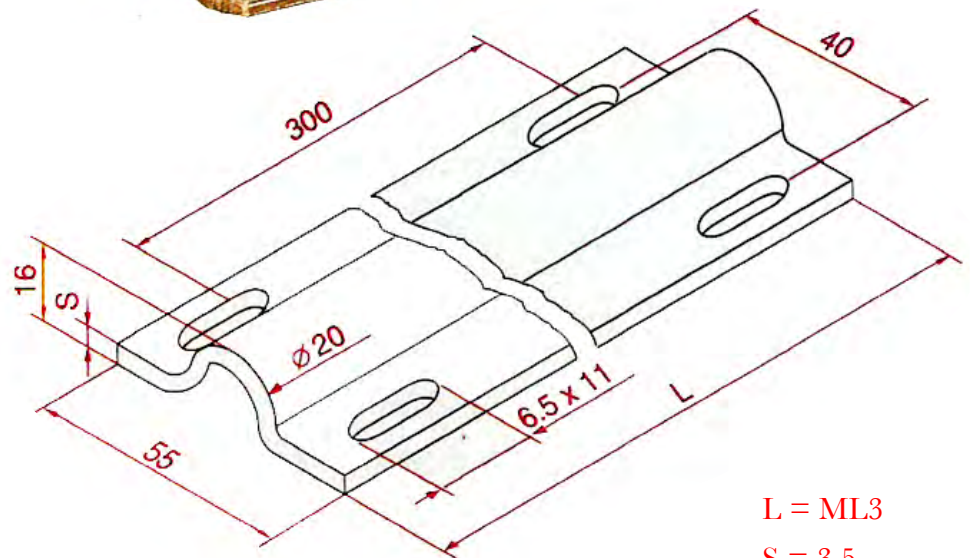
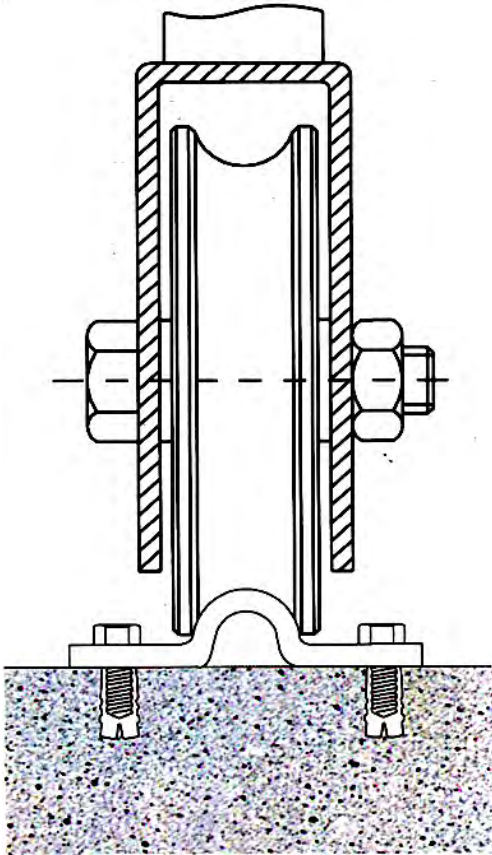
** All measurements are in millimetres.



The advantages of Omega: Omega, the new track ready for use and easy to install according to the regulations laid down by the (uni standards 8612) patented anti-derailment.

- 1 - Simpler and quicker installation.
- 2 - Elimination of the mechanical phase in the track construction.
- 3 - Elimination of scrap material and welding.
- 4 - Modular lengths as required, perfect and immediate coupling.
- 5- Exceptionally easy sliding in order to reduce friction to the minimum.
- 6- Ready-to-use, previously galvanized, one single model for all loads.
- 7- A high quality result at an extremely advantageous cost.

Part No.	Description	Max Load (Kgs)	Price (each)
OMEGA Z3	3-metre Omega guide track for sliding gates (Galvanized)	892	
PIN 53	Pin joint for Omega tracks	2	



L = ML3
S = 3.5

Advantages of Floor:

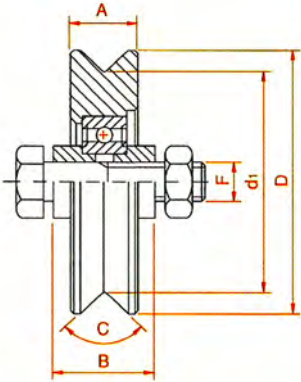
Floor the fixing flooring guide for sliding doors and gates.

Floor, the new sliding guide for sliding doors and gates as well as for other different and special uses like for example the sliding partitions inside factories or storehouses previously galvanised in standard lengths of 6 metres ready for use where there is an existing flooring and where you want an easy to install track with normal dowels.

- * Reduced Costs
- * Reduce the stages of realisation.
- * Assemblage directly in the yard
- * Reduction of friction.
- * Ready to use previously galvanised in standard lengths of 6 mts.
- * A high strength
- * Elimination of welding
- * A highly esthetic aspect
- * Reduction of transportation costs

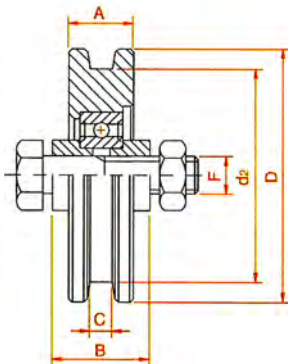
Part No.	Description	Max Load (Kgs)	Price (each)
FLOOR Z3	3-metre FLOOR track to suit O Groove Wheels (Self Colour)	259	

Normal Wheel with One Bearing - V Groove



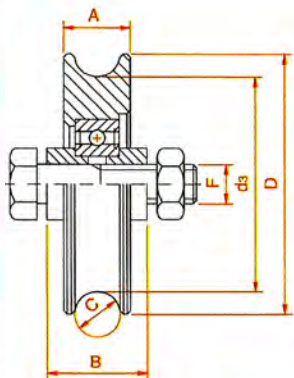
Part No.	Dimension							Price (Each)	
	D	d1	A	B	C	F	L x H x S		
	Ø		mm		V	UNI	mm		
518 V	50	39	18	24	96°	M 10 x 45	50 x 30 x 3		
618 V	60	49	18	24	96°	M 10 x 45	60 x 30 x 3		
718 V	70	59	18	24	96°	M 10 x 45	60 x 30 x 3		
820 V	80	65	20	24	96°	M 12 x 50	80 x 30 x 3		
920 V	90	75	20	24	96°	M 12 x 50	80 x 40 x 3		
1020 V	100	85	20	34	96°	M 14 x 60	100 x 30 x 3		
1220 V	120	105	20	34	96°	M 14 x 60	120 x 40 x 3		
1420 V	140	125	20	34	96°	M 14 x 60	120 x 40 x 3		
1620 V	160	145	20	34	96°	M 14 x 60	140 x 40 x 3		
INOX	820 VI	80	65	20	34	96°	M 14 x 70	80 x 40 x 3	

Normal Wheel with One Bearing - U Groove



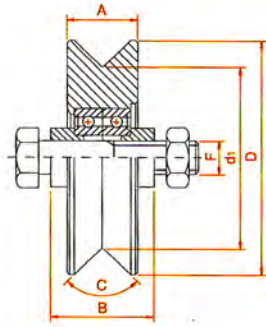
Part No.	Dimension							Price (Each)
	D	d2	A	B	C	F	L x H x S	
	Ø		mm		U	UNI	mm	
618 U	60	49	18	24	7	M 10 x 45	60 x 30 x 3	
718 U	70	59	18	24	7	M 10 x 45	60 x 30 x 3	
820 U	80	65	20	24	7	M 12 x 50	80 x 30 x 3	
920 U	90	75	20	24	7	M 12 x 50	80 x 40 x 3	
1020 U	100	85	20	34	7	M 14 x 60	100 x 40 x 3	
1220 U	120	105	20	34	7	M 14 x 60	120 x 40 x 3	
1420 U	140	125	20	34	7	M 14 x 60	120 x 40 x 3	
1620 U	160	145	20	34	7	M 14 x 60	140 x 40 x 3	

Normal Wheel with One Bearing - O Groove



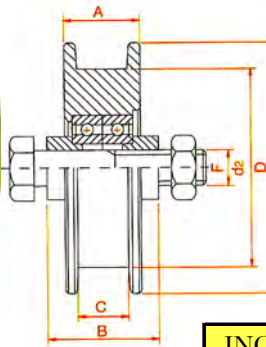
Part No.	Dimension							Price (Each)
	D	d3	A	B	C	F	L x H x S	
	Ø		mm		O	UNI	mm	
827 O	80	60	27	34	21	M 14 x 60	80 x 40 x 3	
1027 O	100	80	27	34	21	M 14 x 60	100 x 40 x 3	
1227 O	120	100	27	34	21	M 14 x 60	120 x 40 x 3	

Normal Wheel with Two Bearings - V Groove



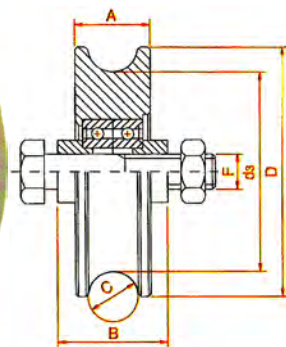
Part No.	Dimension							Max Weight (Kgs)	Price (Each)	
	D	d1	A	B	C	F	L x H x S			
	Ø		mm		V	UNI	mm			
1030 V	100	80	30	44	96°	M 14 x 70	100 x 50 x 3	30		
1230 V	120	100	30	44	96°	M 14 x 70	120 x 50 x 3	350		
1430 V	140	120	30	44	96°	M 14 x 70	140 x 50 x 3	400		
1630 V	160	140	30	44	96°	M 14 x 70	160 x 50 x 3	440		
1830 V	180	160	30	44	96°	M 14 x 70	180 x 50 x 3	470		
2030 V	200	180	30	44	96°	M 14 x 70	200 x 50 x 3	500		
INOX	1230 VI	120	100	30	44	96°	M 14 x 70	120 x 50 x 3	350	
INOX	1630 VI	160	140	30	44	96°	M 14 x 70	160 x 50 x 3	440	

Normal Wheel with Two Bearings - U Groove

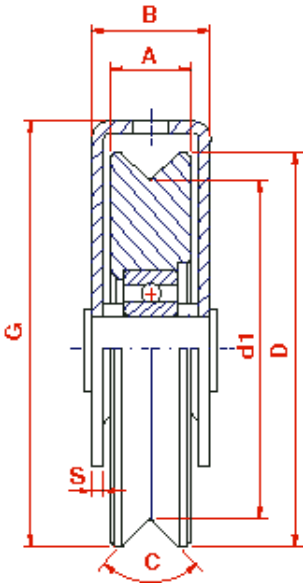
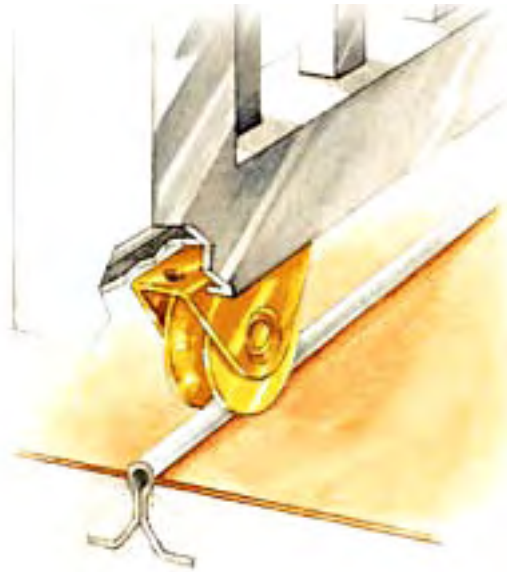


Part No.	Dimension							Max Weight (Kgs)	Price (Each)	
	D	d2	A	B	C	F	L x H x S			
	Ø		mm		U	UNI	mm			
1030 U	100	80	30	44	21	M 14 X 70	100 x 50 x 3	300		
1230 U	120	100	30	44	21	M 14 X 70	120 x 50 x 3	350		
1430 U	140	120	30	44	21	M 14 X 70	140 x 50 x 3	400		
1630 U	160	140	30	44	21	M 14 X 70	160 x 50 x 3	440		
1830 U	180	160	30	44	21	M 14 X 70	180 x 50 x 3	470		
2030 U	200	180	30	44	21	M 14 X 70	200 x 50 x 3	500		
INOX	1230 UI	120	100	30	44	21	M 14 X 70	120 x 50 x 3	350	
INOX	1630 UI	160	140	30	44	21	M 14 X 70	160 x 50 x 3	440	

Normal Wheel with Two Bearings - O Groove

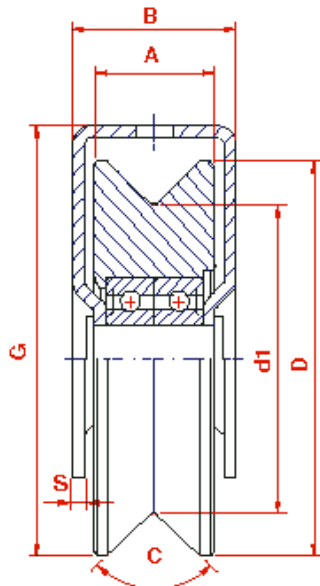
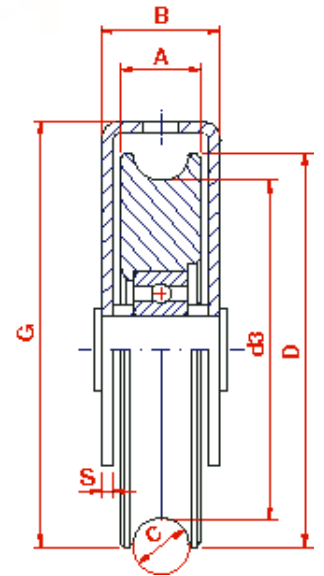


Part No.	Dimension							Max Weight (Kgs)	Price (Each)	
	D	d3	A	B	C	F	L x H x S			
	Ø		mm		O	UNI	mm			
830 O	80	60	30	44	21	M 14 X 70	80 x 50 x 3	250		
1030 O	100	80	30	44	21	M 14 X 70	100 x 50 x 3	300		
1230 O	120	100	30	44	21	M 14 X 70	120 x 50 x 3	350		
1430 O	140	120	30	44	21	M 14 X 70	140 x 50 x 3	400		
1630 O	160	140	30	44	21	M 14 X 70	160 x 50 x 3	440		
1830 O	180	160	30	44	21	M 14 X 70	180 x 50 x 3	470		
2030 O	200	180	30	44	21	M 14 X 70	200 x 50 x 3	500		
INOX	1230 OI	120	100	30	44	21	M 14 X 70	120 x 50 x 3	350	
INOX	1630 OI	160	140	30	44	21	M 14 X 70	160 x 50 x 3	440	



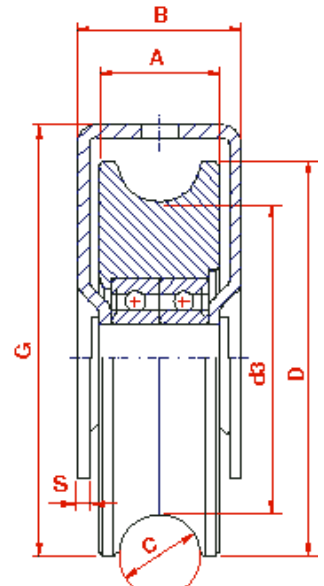
← V GROOVE (One Bearing)									
Part No.	Dimension							Max Weight (Kgs)	Price (Each)
	D	d1	A	B	C	G	S		
	Ø	mm	V	mm	mm	mm	mm		
518 PCV	50	39	18	25	96°	57.5	2.5	60	
618 PCV	60	49	18	25	96°	62.5	2.5	80	
820 PCV	80	65	20	37	96°	82	3	140	

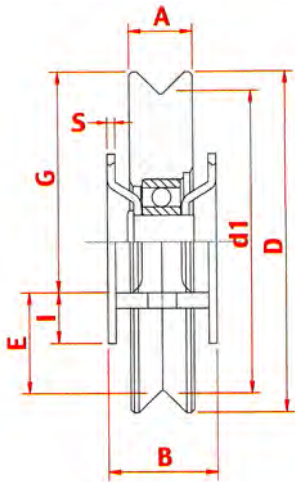
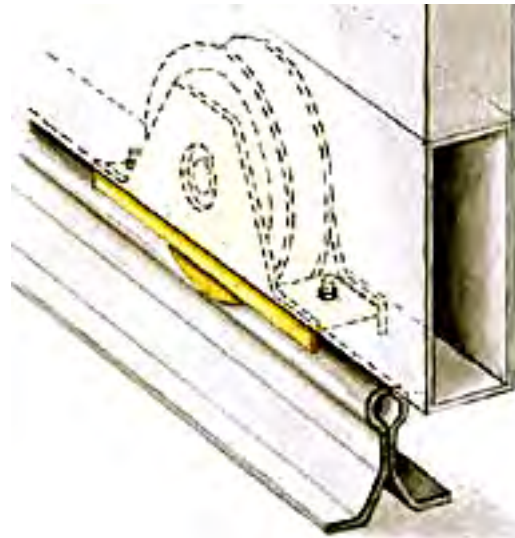
→ U GROOVE (One Bearing)									
Part No.	Dimension							Max Weight (Kgs)	Price (Each)
	D	d3	A	B	C	G	S		
	Ø	mm	O	mm	mm	mm	mm		
827 PCO	80	60	27	37	21	82	3	140	



← V GROOVE (Two Bearings)									
Part No.	Dimension							Max Weight (Kgs)	Price (Each)
	D	d1	A	B	C	G	S		
	Ø	mm	V	mm	mm	mm	mm		
1030 PCV	100	80	30	38	96°	106	3	300	

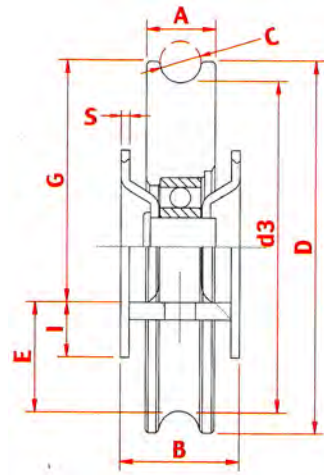
→ U GROOVE (Two Bearings)									
Part No.	Dimension							Max Weight (Kgs)	Price (Each)
	D	d3	A	B	C	G	S		
	Ø	mm	V	mm	mm	mm	mm		
1030 PCO	100	80	30	38	21	106	3	300	





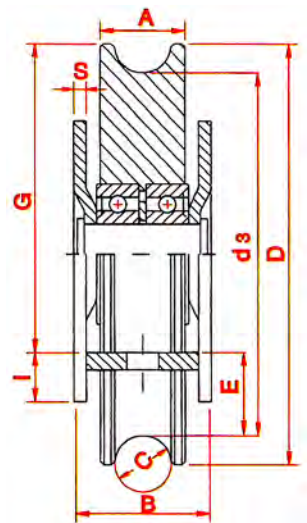
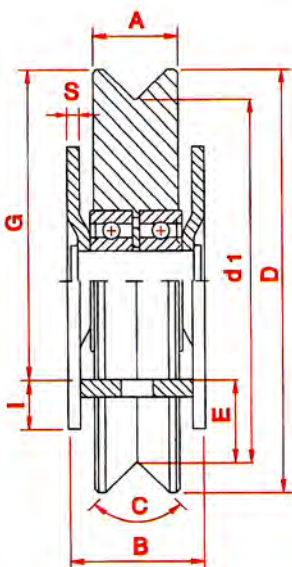
V GROOVE (One Bearing)											
Part No.	Dimension									Max Weight (Kgs)	Price (Each)
	D	d1	C	A	B	G	I	E	S		
	Ø	V	mm								
820 PSV	80	65	96°	27	34	59	11	17	2.5	150	
920 PSV	90	75	96°	27	34	64	11	22	2.5	170	
1020 PSV	100	85	96°	27	34	69	11	27	2.5	210	

O GROOVE (One Bearing)											
Part No.	Dimension									Max Weight (Kgs)	Price (Each)
	D	d3	C	A	B	G	I	E	S		
	Ø	O	mm								
827 PSO	80	65	21	27	34	59	11	17	2.5	150	
927 PSO	90	75	21	27	34	64	11	22	2.5	170	
1027 PSO	100	85	21	27	34	69	11	27	2.5	210	

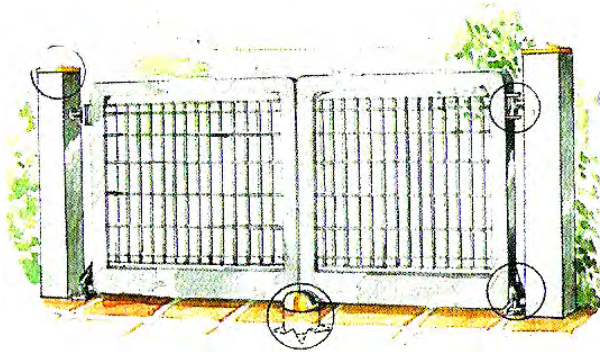
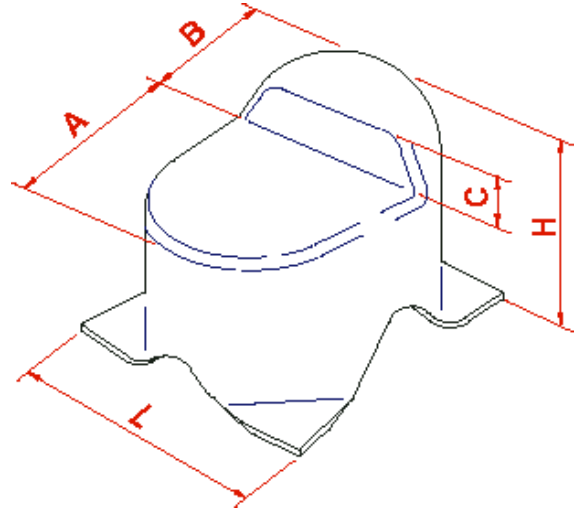


V GROOVE (Two Bearings)											
Part No.	Dimension									Max Weight (Kgs)	Price (Each)
	D	d1	C	A	B	G	I	E	S		
	Ø	V	mm								
822 PSV	80	65	96°	24	32	58	12	14	3	200	
922 PSV	90	75	96°	24	32	63	12	19	3	220	
1022 PSV	100	85	96°	24	32	68	12	24	3	260	
1224 PSV	120	102	96°	24	38	88	14	22	3	350	

O GROOVE (Two Bearings)											
Part No.	Dimension									Max Weight (Kgs)	Price (Each)
	D	d3	C	A	B	G	I	E	S		
	Ø	O	mm								
826 PSO	80	60	21	30	32	58	12	11	3	200	
926 PSO	90	70	21	26	32	63	12	16	3	220	
1026 PSO	100	80	21	26	32	68	12	21	3	260	
1227 PSO	120	100	21	27	38	88	14	21	3	350	



=====**Galvanised Gate Top with Two Leas**=====



Part No.	Dimension (millimetres)					Price (Each)
	L	H	A	B	C	
F 105	92	77	63	35	20	

=====**Lower Plate and Pin**=====

Part No.	Dimension (millimetres)				Price (Each)
	L x H x S	A	B	C	
P 35	70 x 60 x 15	35	40	11	
P 40	80 x 70 x 20	40	40	19	

